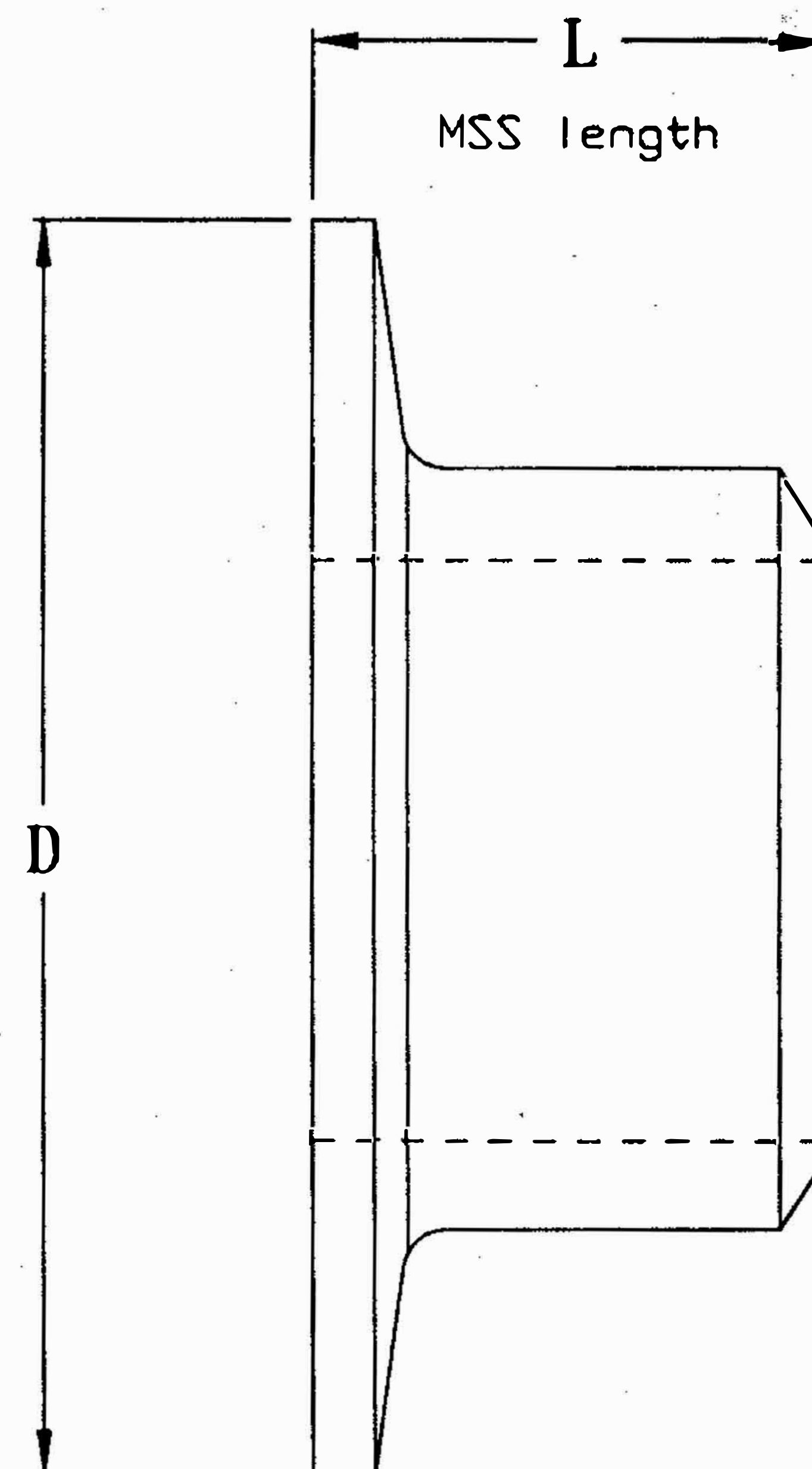


NWXX

CUSTOMER DWG



FURNISHED PLAIN
NO PLATING OR PAINT

NW120	12"	6	15
NW100	10"	5	12.3/4
NW80	8"	4	10.5/8
NW60	6"	3.1/2	8.1/2
NW50	5"	3	7.5/16
NW40	4"	3	6.3/16
NW37	3.1/2"	3	5.1/2
NW35	3"	2.1/2	5
NW30	2.1/2"	2.1/2	4.1/8
NW25	2"	2.1/2	3.5/8
NW20	1-1/2"	2	2.7/8
NW15	1-1/4"	2	2.5/16
NW10	1"	2	2
PART#	SIZE	L LENGTH	D FLANGE DIA

CUSTOMER DWG

AGREEMENT TO MAINTAIN CONFIDENTIALITY

This drawing is owned by Dixon Valve & Coupling Co. and shall be returned upon demand. It is loaned on condition that it shall not be copied or reproduced or submitted to others without the owners consent. In accepting it subject to this condition the recipient further agrees that this drawing or any design detail or concept disclosed herein shall not be used in any way detrimental to or in competition with the Owner. If the recipient does not agree to the terms of this agreement, they shall return this drawing immediately.



DIXON VALVE & COUPLING CO.
U. S. A.

TITLE

STUB ENDS FOR LAPPED FLANGES

DRAWN BY:

Diane

12/1/95

CHECKED BY:

APPROVAL

[Signature]
12.1.95

MAT'L

SCHD. 40
CARBON STEEL PIPE

NWXX