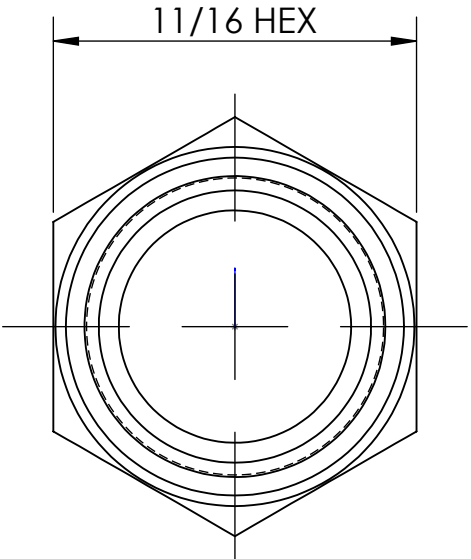
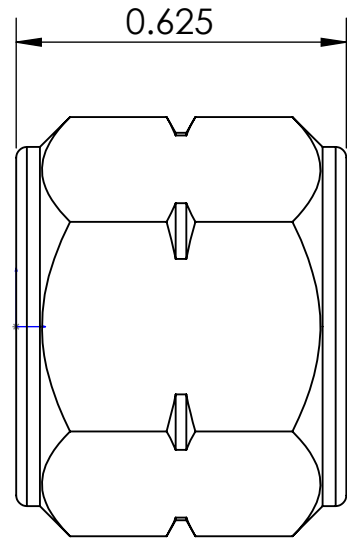
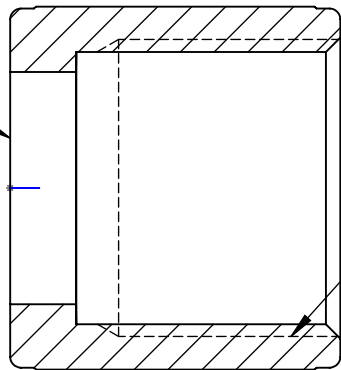
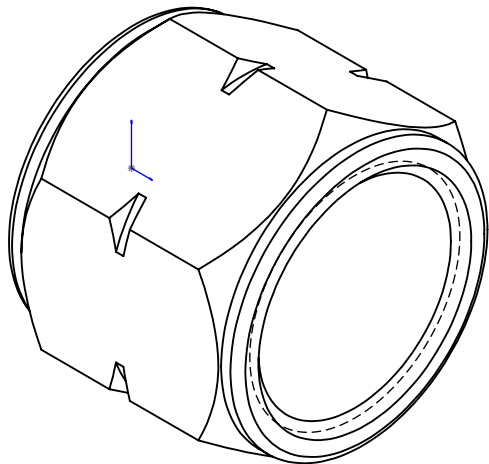


LINE DRAWING NOT FOR PRODUCTION PURPOSES



THRU HOLE DIA. $\frac{.440}{.435}$

9/16 - 18 UNF-2B L.H. THREAD



THIS DRAWING CONTAINS INFORMATION DEEMED PROPRIETARY TO DIXON BRASS AND IS SO TO BE USED ONLY FOR THE PURPOSE FOR WHICH IT IS SUBMITTED, AND FURTHER, SHALL NOT BE COPIED IN WHOLE OR IN PART WITHOUT EXPRESS WRITTEN PERMISSION FIRST OBTAINED FROM DIXON BRASS.

UNLESS OTHERWISE SPECIFIED:

DIMENSIONS ARE IN INCHES

TOLERANCES:
ANGLES: $\pm 0^{\circ}30'$
.X ($\pm .015$)
.XX ($\pm .010$)
.XXX ($\pm .005$)

DIMENSIONS PER ANSI Y14.5



Dixon Brass
Westmont, Illinois USA

| | |
|----------------------|-----------------|
| DRAWN P. MONAGHAN | DATE 5/11/15 |
| APPROVED | DATE |
| ECO NO. | |

TITLE:
WELDING NUT
(ACETYLENE)

| | | |
|---------------------------------|----------------------|----------|
| DRAWING NOT REPRODUCED TO SCALE | | |
| SIZE A | DWG. NO. 1540309N | REV C |