

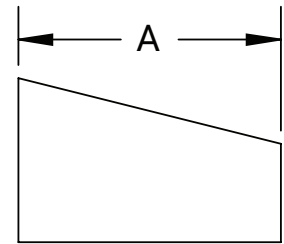
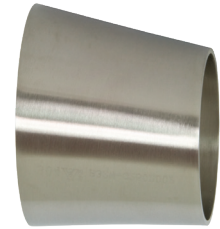
Weld Reducers

Eccentric Weld Reducers – B32W



63-04

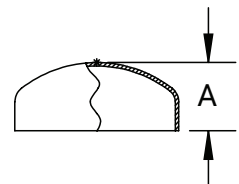
| Tube O.D. | A (in) | Nominal Wall (in) | 304 Stainless Steel Part # | 316L Stainless Steel Part # |
|-----------------|--------|-------------------|----------------------------|-----------------------------|
| 3/4" x 1/2" | 1.00 | .065 | --- | B32W-R7550P |
| 1" x 1/2" | 2.00 | | --- | B32W-R10050P |
| 1" x 3/4" | 1.00 | | --- | B32W-R10075P |
| 1-1/2" x 1/2" | 4.00 | | --- | B32W-R15050P |
| 1-1/2" x 3/4" | 3.00 | | --- | B32W-R15075P |
| 1-1/2" x 1" | 2.00 | | B32W-G150100P | B32W-R150100P |
| 2" x 1/2" | 6.00 | | --- | B32W-R20050P |
| 2" x 3/4" | 5.00 | | --- | B32W-R20075P |
| 2" x 1" | 4.00 | | B32W-G200100P | B32W-R200100P |
| 2" x 1-1/2" | 2.00 | | B32W-G200150P | B32W-R200150P |
| 2-1/2" x 1-1/2" | 4.00 | | B32W-G250150P | B32W-R250150P |
| 2-1/2" x 2" | 2.00 | | B32W-G250200P | B32W-R250200P |
| 3" x 1" | 8.00 | | B32W-G300100P | B32W-R300100P |
| 3" x 1-1/2" | 6.00 | | B32W-G300150P | B32W-R300150P |
| 3" x 2" | 4.00 | | B32W-G300200P | B32W-R300200P |
| 3" x 2-1/2" | 2.00 | | B32W-G300250P | B32W-R300250P |
| 4" x 1-1/2" | 10.00 | | B32W-G400150P | B32W-R400150P |
| 4" x 2" | 8.00 | | B32W-G400200P | B32W-R400200P |
| 4" x 2-1/2" | 6.00 | | B32W-G400250P | B32W-R400250P |
| 4" x 3" | 4.00 | | B32W-G400300P | B32W-R400300P |
| 6" x 3" | 5.50 | B32W-G600300P | B32W-R600300P | |
| 6" x 4" | 5.50 | B32W-G600400P | B32W-R600400P | |
| 8" x 4" | 6.00 | B32W-G800400P | B32W-R800400P | |
| 8" x 6" | 6.00 | B32W-G800600P | B32W-R800600P | |



Weld End Caps

Weld End Caps – B16W

| Tube O.D. | A (in) | Nominal Wall (in) | 304 Stainless Steel Part # | 316L Stainless Steel Part # |
|-----------|--------|-------------------|----------------------------|-----------------------------|
| 1/2" | .25 | .065 | --- | B16W-R50 |
| 3/4" | .31 | | --- | B16W-R75 |
| 1" | .38 | | B16W-G100 | B16W-R100 |
| 1-1/2" | .56 | | B16W-G150 | B16W-R150 |
| 2" | .75 | | B16W-G200 | B16W-R200 |
| 2-1/2" | 1.00 | | B16W-G250 | B16W-R250 |
| 3" | 1.25 | | B16W-G300 | B16W-R300 |
| 4" | 1.50 | .083 | B16W-G400 | B16W-R400 |
| 6" | 2.00 | .109 | B16W-G600 | B16W-R600 |
| 8" | 2.50 | | B16W-G800 | B16W-R800 |



NOTE: Other sizes available upon request.