

W-Series Hydraulic Couplings

Applications

- Designed for applications requiring a coupling that can be connected under residual pressure with minimum spillage and air inclusion
- Widely used on dump trailer wet-line hydraulic systems and oil field equipment
- Not recommended for continuous hydraulic impulse applications

Features

- Interchangeable with Eaton®/Aeroquip® 5100-Series, Parker® 6100-Series, Snap-tite 78-Series, Faster® Series-FB, and Safeway® S-51-Series
- Contact Dixon® for pressure ratings and other technical information

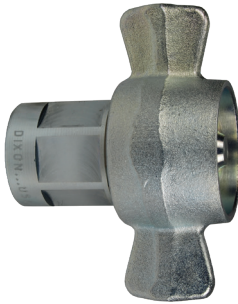
Specification

- Nitrile rubber seals are standard, providing a temperature range of -40°F to 250°F (-40°C to 121°C)

Female Threaded Couplers



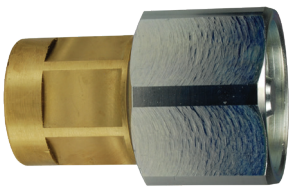
brass



steel

Body Size	Threads	Brass Part #	Steel Part #
1/4"	1/8" – 27 NPTF	2WF1-B	---
3/8"	1/4" – 18 NPTF	3WF2-B	---
	3/8" – 18 NPTF	3WF3-B	---
3/4"	1/2" – 14 NPTF	6WF4-B	---
	1/2" – 14 BSPP	6WBF4-B	---
	3/4" – 14 NPTF	6WF6-B	---
	3/4" – 14 BSPP	6WBF6-B	---
1"	1" – 11-1/2 NPTF	8WF8-B	8WF8
	1" – 11 BSPP	8WBF8-B	---
1-1/4"	1-1/4" – 11-1/2 NPTF	10WF10-B	---
	1-1/4" – 11 BSPP	10WBF10-B	---
1-1/2"	1-1/2" – 11-1/2 NPTF	12WF12-B	---
	1-1/2" – 11 BSPP	12WBF12-B	---

Hex-Nut Female Threaded Couplers



brass



steel

Body Size	Threads	Brass Part #	Steel Part #
1/4"	1/8" – 27 NPTF	2WF1-B-HN	---
3/8"	1/4" – 18 NPTF	3WF2-B-HN	---
	3/8" – 18 NPTF	3WF3-B-HN	---
3/4"	1/2" – 14 NPTF	6WF4-B-HN	---
	1/2" – 14 BSPP	6WBF4-B-HN	---
	3/4" – 14 NPTF	6WF6-B-HN	---
	3/4" – 14 BSPP	6WBF6-B-HN	---
1"	1" – 11-1/2 NPTF	8WF8-B-HN	8WF8-HN
	1" – 11 BSPP	8WBF8-B-HN	---
1-1/4"	1-1/4" – 11-1/2 NPTF	10WF10-B-HN	---
	1-1/4" – 11 BSPP	10WBF10-B-HN	---
1-1/2"	1-1/2" – 11-1/2 NPTF	12WF12-B-HN	---
	1-1/2" – 11 BSPP	12WBF12-B-HN	---