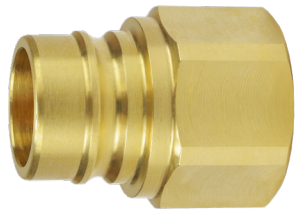


V-Series Hydraulic Couplings

Interchange Unvalved Female Threaded Plugs



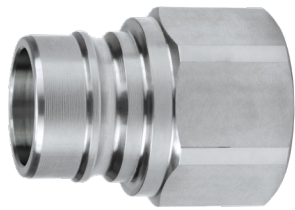
steel



brass

Body Size	Threads	Steel Part #	Brass Part #
1/4"	1/4" - 18 NPTF	V2F2-E	V2F2-B-E
	1/4" - 19 BSPP	V2BF2-E	V2BF2-B-E
3/8"	3/8" - 18 NPTF	V3F3-E	V3F3-B-E
	3/8" - 19 BSPP	V3BF3-E	V3BF3-B-E
1/2"	1/2" - 14 NPTF	V4F4-E	V4F4-B-E
	1/2" - 14 BSPP	V4BF4-E	V4BF4-B-E
3/4"	3/4" - 14 NPTF	V6F6-E	V6F6-B-E
	3/4" - 14 BSPP	V6BF6-E	V6BF6-B-E
1"	1" - 11-1/2 NPTF	V8F8-E	V8F8-B-E
	1" - 11 BSPP	V8BF8-E	V8BF8-B-E
1-1/4"	1-1/4" - 11-1/2 NPTF	V10F10-E	V10F10-B-E
	1-1/4" - 11 BSPP	V10BF10-E	V10BF10-B-E
1-1/2"	1-1/2" - 11-1/2 NPTF	V12F12-E	V12F12-B-E
2"	2" - 11-1/2 NPTF	V16F16-E	V16F16-B-E

K



stainless steel

Body Size	Threads	316 Stainless Steel Part #
1/4"	1/4" - 18 NPTF	V2F2-SS-E
	1/4" - 19 BSPP	V2BF2-SS-E
3/8"	3/8" - 18 NPTF	V3F3-SS-E
	3/8" - 19 BSPP	V3BF3-SS-E
1/2"	1/2" - 14 NPTF	V4F4-SS-E
	1/2" - 14 BSPP	V4BF4-SS-E
3/4"	3/4" - 14 NPTF	V6F6-SS-E
	3/4" - 14 BSPP	V6BF6-SS-E
1"	1" - 11-1/2 NPTF	V8F8-SS-E
	1" - 11 BSPP	V8BF8-SS-E
1-1/4"	1-1/4" - 11-1/2 NPTF	V10F10-SS-E
	1-1/4" - 11 BSPP	V10BF10-SS-E
1-1/2"	1-1/2" - 11-1/2 NPTF	V12F12-SS-E
2"	2" - 11-1/2 NPTF	V16F16-SS-E