

AG-Series Hydraulic Couplings

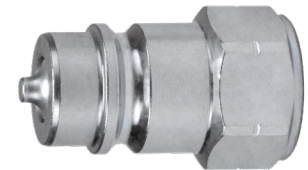
Agricultural Ball Valve Female Threaded Plugs

Body Size	Threads	Steel Part #
1/4"	1/4" - 18 NPTF	AG2F2
3/8"	3/8" - 18 NPTF	AG3F3
1/2"	1/2" - 14 NPTF	AG4F4
	1/2" - 14 BSPP	AG4BF4
	3/4" - 16 ORB	AG4OF4
	7/8" - 14 ORB	AG4OF5
	3/4" - 14 NPTF	AG4F6
3/4"	3/4" - 14 NPTF	AG6F6
1"	1" - 11-1/2 NPTF	AG8F8



Agricultural Poppet Valve Female Threaded Plugs

Body Size	Threads	Steel Part #
1/4"	1/4" - 18 NPTF	AG2F2-PV
3/8"	3/8" - 18 NPTF	AG3F3-PV
1/2"	1/2" - 14 NPTF	AG4F4-PV
	1/2" - 14 BSPP	AG4BF4-PV
	3/4" - 16 ORB	AG4OF4-PV
	7/8" - 14 ORB	AG4OF5-PV
	3/4" - 14 NPTF	AG4F6-PV
3/4"	3/4" - 14 NPTF	AG6F6-PV
1"	1" - 11-1/2 NPTF	AG8F8-PV



AG-Series Agricultural Interchange Connect Under Residual Pressure Plug (Female Threads)

Body Size	Part Detail			Length		Maximum O.D.		Hex Inch
	Part #	Threads	Material	Inch	mm	Inch	mm	
1/2"	AGE4F4-PV	1/2" - 14 NPTF	steel	2.03	51.56	1.20	30.48	1-1/16"
	AGE4OF4-PV	3/4" - 16 ORB						



Agricultural Dust Plugs

Body Size	Elastomer Part #
1/4"	2AGDP
3/8"	3AGDP
1/2"	For 1/2" Please refer to the color coded K-series dust plugs on pg. 503
3/4"	6AGDP
1"	8AGDP

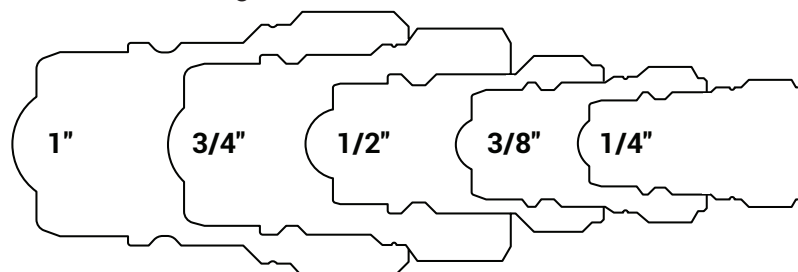


Agricultural Dust Caps

Body Size	Elastomer Part #
1/4"	AG2DC
3/8"	AG3DC
1/2"	For 1/2" Please refer to the color coded K-series dust caps on pg. 503
3/4"	AG6DC
1"	AG8DC



Plug Profiles



Industry/Competitor Interchange

Pioneer® 4000
 Safeway® S20
 Faster® NS/NV
 Stucchi® IR