


## Dixon® Type C Couplers with Notched NOS Shank

### Coupler and NOS Shank

#### Features

- The system allows improved inventory management by stocking one stem and two ferrules, and cover the same hose range with less inventory. You must purchase a fitting and the matching ferrule to create an assembly.
- For hose outside diameters of 2-4/64" and below, the couplings are crimp only 
- For hose outside diameters of 2-5/64" and above, the couplings can be crimped or swaged
- For use with notched ferrules on page 45
- See page 374 for male NPT notched NOS fittings



Size	316 Stainless Steel Part #
1-1/2"	150CNOSSS <sup>1</sup>
2"	200CNOSSS <sup>1</sup>
3"	300CNOSSS <sup>1</sup>

<sup>1</sup> Part will be discontinued as stock is depleted

Only use the NOS shank with the NOS ferrules.

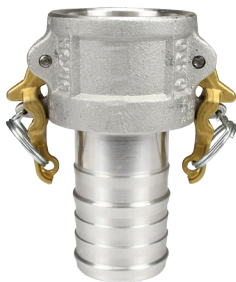
Due to differences in dimensions and tolerances for safety reasons, do not use other manufacturers' stems or ferrules with Dixon® products. 

## Boss-Lock Type C Couplers

### Coupler and Hose Shank

#### Features

- Couplers are supplied standard with a nitrile rubber gasket, other gasket types are available on pages 68 - 71
- All Boss-Lock couplers are supplied with pull-ring safety clips



356T6 aluminum



brass



plated malleable iron



316 stainless steel

Size	356T6 Aluminum Part #	Brass Part #
3/4"	AC075	BC075
1"	AC100	BC100
1-1/4"	AC125	BC125
1-1/2"	AC150	BC150
2"	AC200	BC200
2-1/2"	AC250	BC250
3"	AC300	BC300
4"	AC400	BC400
6"	AC600	BC600
8"	AC800 <sup>1</sup>	---

Size	Plated Malleable Iron Part #	316 Stainless Steel Part #
3/4" x 1/2"	---	RC050BL
3/4"	IC075	RC075BL
1"	IC100	RC100BL
1-1/4"	---	RC125BL
1-1/2"	IC150	RC150BLNO
2"	IC200	RC200BLNO
3"	IC300	RC300BL
4"	IC400 <sup>2</sup>	RC400BLNO

<sup>1</sup> Dixon and Boss-Lock cam & groove couplings do not interchange in the 8" size 

<sup>2</sup> Ductile iron