

## Venting EZ Boss-Lock Cam & Groove

### Application

- Transfer of fluids and solids, with a safe disconnection

### Sizes

- 1", 1-1/2", 2", 3", and 4"

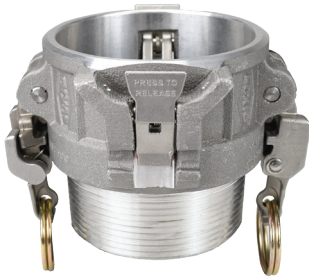
### Materials

- 316 stainless steel
- 356T6 aluminum

### Features

- In the event of an accidental disconnection under pressure, the venting feature retains the coupling and allows the stored pressure to vent off
- Provides a venting feature when used with standard cam adapters
- The safety venting feature of this coupling doesn't require a special adapter to work as a system

### Type B Coupler Coupler and Male NPT



Size	356T6 Aluminum Part #	316 Stainless Steel Part #
1"	---	RLBEZ100
1-1/2"	---	RLBEZ150
2"	ALBEZ200	RLBEZ200
3"	ALBEZ300	RLBEZ300
4"	ALBEZ400	RLBEZ400

### Type C Coupler Coupler and Hose Shank



Size	356T6 Aluminum Part #	316 Stainless Steel Part #
1"	---	RLCEZ100 <sup>1</sup>
1-1/2"	---	RLCEZ150 <sup>1</sup>
2"	ALCEZ200 <sup>1</sup>	RLCEZ200 <sup>1</sup>
3"	ALCEZ300 <sup>1</sup>	RLCEZ300 <sup>1</sup>
4"	ALCEZ400 <sup>1</sup>	RLCEZ400 <sup>1</sup>

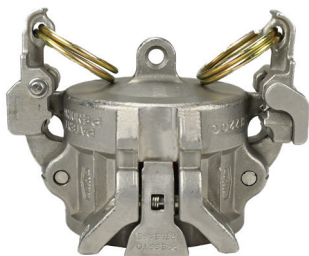
<sup>1</sup> Hose drop shank

### Type D Coupler Coupler and Female NPT



Size	356T6 Aluminum Part #	316 Stainless Steel Part #
1"	---	RLDEZ100
1-1/2"	---	RLDEZ150
2"	ALDEZ200	RLDEZ200
3"	ALDEZ300	RLDEZ300
4"	ALDEZ400	RLDEZ400

### Type H Dust Cap



Size	356T6 Aluminum Part #	316 Stainless Steel Part #
1"	---	RLHEZ100
1-1/2"	---	RLHEZ150
2"	ALHEZ200	RLHEZ200
3"	ALHEZ300	RLHEZ300
4"	ALHEZ400	RLHEZ400