

Features

- Positive metal-to-polymer seal
- Leakproof seal forms when the metal head of the stem makes contact with the patented polymer seat in the spud
- Easy to seal
- Use with Boss clamps found on pages 169-170

- Non-metallic polymer seat resists most chemicals found in manufacturing facilities (reference corrosion resistance chart on pages 1120-1125)

Specification

- Recommended for steam service up to 450°F (232°C)

Boss Ground Joint Couplings with Female Spud

Hose Shank x NPT	Plated Steel and/or Iron Part #	316 Stainless Steel Part #	Brass Part #
1/4"	GF1 ¹	---	---
3/8"	GF3 ¹	---	---
1/2"	GF6	---	---
1/2" x 3/4"	GF26-1	---	---
3/4"	GF26	RGF26	BGF26
1"	GF36	RGF36	BGF36
1-1/4"	GF51	RGF51	---
1-1/2"	GF61	RGF61	---
2"	GF81 ²	RGF81 ²	---
2-1/2"	GF96	---	---
3"	GF111 ²	---	---
4"	GF141	---	---
6"	GF201 ¹	---	---

¹ 1/4", 3/8", and 6" available only with copper seat spuds

² Not to be used with #250, #275, or #306 Boss clamps



Boss Ground Joint Stems

Size	Plated Steel and/or Iron Part #	Opt Qty	316 Stainless Steel Part #	Brass Part #
1/4"	GBA	100	---	---
3/8"	GCA	100	---	---
1/2"	GB1	100	---	---
1/2" x 3/4"	GB6-1	50	---	---
3/4"	GB6	50	RGB6	BGB6
1"	GB11	50	RGB11	BGB11
1-1/4"	GB16	25	RGB16	---
1-1/2"	GB21	25	RGB21	---
2"	GB26 ²	10	RGB26 ¹	---
2-1/2"	GB31	5	---	---
3"	GB36 ²	5	---	---
4"	GB46	5	---	---
6"	GB66	2	---	---

¹ Not to be used with #250, #275, or #306 Boss clamps

² GB26/GB36 have machined shank to accept Boss clamps, King Crimp® sleeves, and ferrules. Use only Boss clamps on GB26/GB36 for steam service.



The King Crimp sleeve and ferrule are not intended for steam service.



WARNING: Misuse of this product can cause serious injury or even death.



WARNING: Pressurized steam is an extremely dangerous commodity. Only hose, fittings, clamps, and accessory items that have been tested and approved by Dixon for use with Dixon products for steam service should ever be used. Never use an unapproved item for steam service. Always follow the manufacturer's product recommendations for pressurized steam handling.

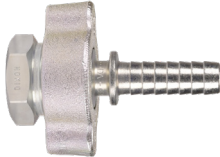


WARNING: For safety reasons, due to differences in dimensions and tolerances, do not interchange other manufacturer's products with Dixon products.

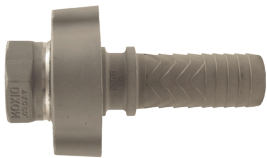


WARNING: Worn-out hose couplings can be dangerous. Coupling users should be trained in proper use, application, and the use of safety devices where indicated. Training should also include how to inspect for wear, so couplings are replaced when needed.

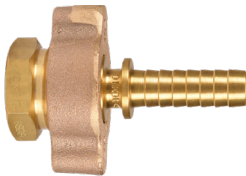
D



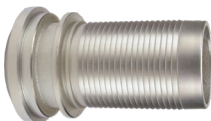
Plated iron/steel



316 stainless steel



Brass



Plated iron/steel



316 stainless steel



Brass