

5500-Series API Couplers

Application

- Combined with API adapters, these couplers are suitable for railcar and tank truck loading or unloading

Features

- Locking five-cam design provides easy alignment and tight connection
- Modular design allows various face seal combinations to be compatible with different alternative fuels, performance levels, and applications
- Shaft seals can be changed without removing coupler from the loading arm
- Fully interlocked collar cannot be opened when connected and cannot be disconnected when opened
- Replaceable seal design while coupler is on loading arm
- 4" TTMA inlet mounting flange connection
- Ball-end handle for easy and comfortable operation
- No special tools needed for maintenance
- Reference dixonvalve.com for bill of materials and a complete list of repair kits

Materials

- Body: hard coated anodized 356T6 aluminum
- Shroud: hard coated anodized 356T6 aluminum with stainless steel insert
- Link, shaft, pin, and crank: hardened 17-4PH stainless steel
- Cam: CF8M stainless steel
- Poppet and bearing: Bayloy
- Seals: Baylast™, EPDM, FFKM, FKM-B, FKM-GFLT, and fluorosilicone

Specifications

- Seal operating temperature:
 - Baylast: **-35°F to 212°F (-37°C to 100°C)**
 - EPDM: **-60°F to 250°F (-50°C to 121°C)**
 - FFKM: **-15°F to 600°F (-26°C to 315°C)**
 - FKM-B: **-15°F to 400°F (-26°C to 204°C)**
 - FKM-GFLT: **-35°F to 400°F (-37°C to 204°C)**
 - Fluorosilicone: **-50°F to 350°F (-45°C to 176°C)**
- Flow rate: **600 GPM** at **3 PSI** pressure drop, maximum flow rate: **1,000 GPM**
- Fully compliant with API RP1004:2003 specifications
- Burst tested: **450 PSI**

Description	Seal Material	Part #	Complete Repair Kit ¹ Part #	Replaceable Nose Seal Part #
4" API coupler	Baylast	5500BL	5500RK2	5500RK8
	EPDM	5500E	5500RK3	5500RK9
	FFKM	5500K	5500RK6	5500RK12
	FKM-B	5500B	5500RK1	5500RK7
	FKM-GFLT	5500G	5500RK5	5500RK11
	Fluorosilicone	5500F	5500RK4	5500RK10

¹ Complete repair kit contains all the seals, pins, and cotter keys to replace all the seals.
NOTE: Stainless steel handles and locking handle kit options are available please contact Dixon® for a quote.

Description	Seal Material	Part #
4" API rack coupler with Inconel® springs for crude service	FKM-B	5500BC

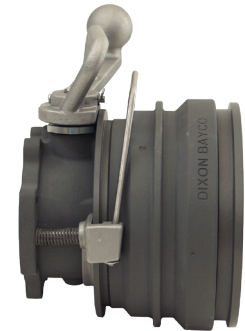
API Coupler Repair Kits

Description	Part #
small parts kit for 5500 series rack coupler	5500RK21
aluminum replacement handle kit with bolt and nut	5500RK22
stainless steel replacement handle kit with bolt and nut	5500RK23
locking handle kit	5500RK24
aluminum short handle replacement kit with bolt and nut	5500RK25
replacement poppet kit with links, pins, and cotter pin	5500RK26
replacement seal cylinder – no seal	5500RK27
replacement FKM-GFLT bearing kit for 5500	5500RK51



C

Normal wear and tear items (including seals) not covered¹



5500-Series



Replaceable nose seal: Replace without removal from the loading arm



5500RK24