

Split Flange Swivel Components

Split Flange Bearing Packs

Size	Carbon Steel Part #
2"	2SFBP
3"	3SFBP
4"	4SFBP



C

Split Flange Nose Pieces

Feature

- 2 required per bearing pack

Size	Aluminum Part #	Carbon Steel Part #	316 Stainless Steel Part #
2"	2SFNPAL	2SFNPCS	2SFNPSS
3"	3SFNPAL	3SFNPCS	3SFNPSS
4"	4SFNPAL	4SFNPCS	4SFNPSS



Seal Kits

Features

- Kits contains: seal, PTFE retainer, carbon steel bolts
- 1 required per bearing pack

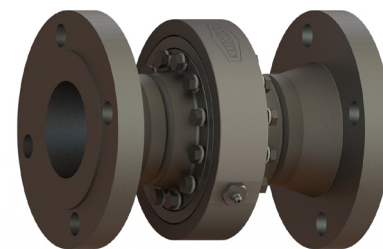
Size	Baylast™ Part #	FKM Part #	PTFE Part #
2"	2SFSK-BAYLAST	2SFSK-VI	2SFSK-TES
3"	3SFSK-BAYLAST	3SFSK-VI	3SFSK-TES
4"	4SFSK-BAYLAST	4SFSK-VI	4SFSK-TES



Split Flange Style 20 Weld x Weld



Split Flange Style 20 150# Flange x 150# Flange



Size	Carbon Steel Weld x Weld with Baylast Pressure Seals Part #	Carbon Steel Weld x Weld with FKM Pressure Seals Part #	Carbon Steel 150# Flange x 150# Flange with Baylast Pressure Seals Part #	Carbon Steel 150# Flange x 150# Flange with FKM Pressure Seals Part #
2"	SF220WXWCS00 ¹	SF220WXWCS10 ¹	SF220FGXFGCS00	SF220FGXFGCS10
3"	SF320WXWCS00 ¹	SF320WXWCS10 ¹	SF320FGXFGCS00	SF320FGXFGCS10
4"	SF420WXWCS00 ¹	SF420WXWCS10 ¹	SF420FGXFGCS00	SF420FGXFGCS10

¹ Remove nose piece prior to welding. Reinstall when welding is complete and parts have had sufficient time to cool.