

C

Sight Flow Indicators

Features

- Due to the proprietary blending of petroleum products, Dixon® recommends that thermoplastic tubing and gaskets be immersion tested in the product to be handled to ensure compatibility (not compatible with crude oil)
- Maximum flange bolt torque is 200 in-lb (inch pounds)
- For dimensional information on tank truck flange drilling, reference dixonvalve.com



TTMA Flanged Short Sight Flow Indicators

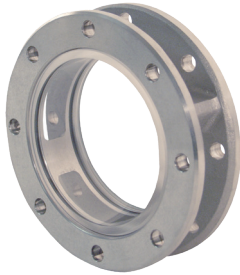
Features

- Durable cast aluminum housing, replaces competitions all acrylic sight glass as commonly found on tank trucks
- Allows for visual identification of the fuel grade prior to opening the valve
- Works with tank truck flanged butterfly valves found on gasoline trucks
- Low-cost sight glass tube can be easily replaced

Specification

- Rated to **150 PSI**

Size	Width	Aluminum Part #
3"	1-3/4"	5200-SFI-3
4"	1-3/4"	5200-SFI



TTMA Flanged Sight Flow Indicators

Features

- Allows for visual identification of the fuel grade prior to opening the valve
- Works with tank truck flanged butterfly valves found on gasoline trucks
- Larger I.D. 4-3/8" flow indicator allows tank truck flanged butterfly valves to connect to either end of the indicator

Specification

- Pressure rating: **150 PSI**

Size	Width	I.D.	Aluminum Part #
4"	3-1/4"	4-3/8"	5201-SFI



Features

- Allows for visual identification of the fuel grade prior to opening the valve
- 4" flow diameter

Size	I.D.	Aluminum Part #
4"	4-3/8"	4-1460-AL



NOTE: For flange dimensions, diagrams, and additional information, please reference dixonvalve.com.

TTMA Flanged Sight Flow Indicators

Size	Nominal Width	Acrylic Part #
3"	1-3/4"	TT3ASG
4"	1-3/4"	TT4ASG
3"	1-3/4"	TT3ASG-ETH ¹
4"	1-3/4"	TT4ASG-ETH ¹

Optically Enhanced Sight Glass

Size	Nominal Width	Acrylic Part #
3"	1-3/4"	TT3ASGOE
4"	1-3/4"	TT4ASGOE
3"	1-3/4"	TT3ASG-ETHOE ¹
4"	1-3/4"	TT4ASG-ETHOE ¹



¹ For use with ethanol

NOTE: For flange dimensions, diagrams, and additional information, please reference dixonvalve.com.