

### TTMA Flange Spacer with 1/2" Port

Size	Description	Aluminum Part #
4"	flange spacer with 1/2" female NPT port	TTFS4AL-FP50



### TTMA Flange Extensions

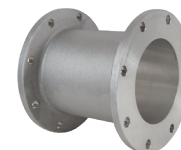
**Application**

- Used on load arms to connect an API load coupler to a load arm

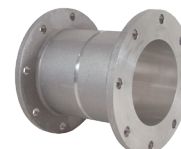
**Features**

- Adds a 6" space between the load arm and the tank truck
- Extension with groove provides a specified parting point to prevent excessive damage to the loading arm

Size	Description	Aluminum Part #
4"	TTMA flange extension	TETF4AL
	TTMA flange extension with groove	TETFG4AL
	TTMA flange extension with 1/2" female NPT port	TETF4ALFP50



TETF4AL



TETFG4AL

NOTE: For flange dimensions, diagrams, and additional information, please reference dixonvalve.com.

### Cam & Groove Adapter and TTMA Flange

**Features**

- Aluminum flanges have a flat face, stainless flanges have a raised face
- Reference dixonvalve.com for flange drilling standards
- Pressure rating is based on the seal of the mating part, see ratings on page 20

Size	356T6 Aluminum Part #	316 Stainless Steel Part #
3"	300-ALT-AL	300-ALT-SS
3" x 4"	3040ALTAL	---
4"	400-ALT-AL	400-ALT-SS <sup>1</sup>
6"	600-ALT-AL	---



<sup>1</sup> Part is produced as a welded fabrication

### Cam & Groove Coupler and TTMA Flange

**Features**

- Supplied standard with a nitrile rubber gasket, other gaskets available on pages 68 - 71
- Use Dixon® replacement handles only

Size	356T6 Aluminum Part #
3"	300-DLT-AL
3" x 4"	3040DLTAL
4"	400-DLT-AL
6"	600-DLT-AL



NOTE: For flange dimensions, diagrams, and additional information, please reference dixonvalve.com.

### Cam & Groove 22-1/2° Adapter and TTMA Flange

**Feature**

- Pressure rating is based on the seal of the mating part, see ratings on page 20

Size	356T6 Aluminum Part #
3"	30022ALTAL
4"	40022ALTAL



### Cam & Groove 22-1/2° Coupler and TTMA Flange

**Features**

- Supplied standard with a nitrile rubber gasket, other gaskets available on pages 68 - 71
- Use Dixon replacement handles only

Size	356T6 Aluminum Part #
4"	40022DLTAL



NOTE: For flange dimensions, diagrams, and additional information, please reference dixonvalve.com.