

## NPT Threaded Square Head Plugs

### Feature

- Forged steel and brass plugs are solid; all others are cored

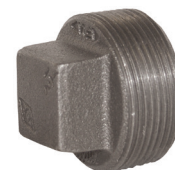
Male NPT	150# Iron Part #	150# Galvanized Iron Part #	150# 316 Stain. Steel Part #
1/8"	SHP18	SHP18G	SHP18SS
1/4"	SHP14	SHP14G	SHP14SS
3/8"	SHP38	SHP38G	SHP38SS
1/2"	SHP50	SHP50G	SHP50SS
3/4"	SHP75	SHP75G	SHP75SS
1"	SHP100	SHP100G	SHP100SS
1-1/4"	SHP125	SHP125G	SHP125SS
1-1/2"	SHP150	SHP150G	SHP150SS
2"	SHP200	SHP200G	SHP200SS
2-1/2"	SHP250	SHP250G	SHP250SS
3"	SHP300	SHP300G	SHP300SS
4"	SHP400	SHP400G	SHP400SS
5"	SHP500	---	---
6"	SHP600	SHP600G	---

Male NPT	3000# Forged Steel Part #	125# Brass Part #	Lead-Free Brass Part #
1/8"	---	---	2110200C <sup>1,2</sup>
1/4"	SHP14FS	---	2110400C <sup>1,2</sup>
3/8"	SHP38FS	---	2110600C <sup>1,2</sup>
1/2"	SHP50FS	---	2110800C <sup>1,2</sup>
3/4"	SHP75FS	---	2111200C <sup>1,2</sup>
1"	SHP100FS	SHP100B	2111600C <sup>1,2</sup>
1-1/2"	SHP150FS	SHP150B	---
2"	SHP200FS	---	---
3"	SHP300FS	---	---

<sup>1</sup> Lead-free brass per NSF/ANSI 372, Brass Alloy 260/270

<sup>2</sup> Threads are PTF-SAE



150# iron



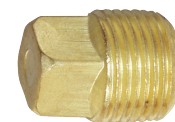
150# galvanized iron



150# 316 stainless steel



3000# forged steel



125# brass

## Hex Head Plugs

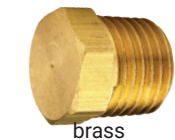
NPTF	Brass		Pkg Qty	Lead-Free Brass <sup>1,2</sup> Part #	316 Stainless Steel <sup>3</sup> Part #	Pkg Qty
	Previous Part #	Part #				
1/8"	HHP1M	1630200C	50	1630200CLF	1630200SS	50
1/4"	HHP2M	1630400C	100	1630400CLF	1630400SS	100
3/8"	HHP3M	1630600C	25	---	1630600SS	25
1/2"	HHP4M	1630800C	25	---	1630800SS	25
3/4"	HHP6M	1631200C	25	---	1631200SS	25
1"	HHP8M	1631600C	10	---	1631600SS	10

NOTE: Standard brass hex head plug is hollow; lead-free brass and 316 stainless are solid

<sup>1</sup> Lead-free brass <=0.25% lead; Alloy CA2745; Alloy C46400

<sup>2</sup> Conforms To: Safe Drinking Water Act (SDWA) of Jan. 4, 2014; California AB1953; RoHS Compliant

<sup>3</sup> NPT thread



brass



316 stainless steel

## Hex Socket Plugs

### Approval

- Lead-free brass per NSF/ ANSI 372

NPTF	Lead-Free Brass 260/270		Opt Qty	316 Stainless Steel <sup>1</sup> Part #
	Previous Part #	Part #		
1/8"	219-0200	2190200C	50	2190200SS
1/4"	219-0400	2190400C	100	2190400SS
3/8"	219-0600	2190600C	25	2190600SS
1/2"	219-0800	2190800C	25	2190800SS
3/4"	219-1200	2191200C	25	2191200SS
1"	---	2191600C	10	2191600SS

<sup>1</sup> NPT thread

NOTE: For additional information on pipe dimensions please reference dixonvalve.com.



brass



316 stainless steel