



HSG-Series Hygienic Sight Glasses



single pin clamp



bolted clamp

Applications

- Used widely in the food, dairy, and beverage sanitary processes to view products and fluids
- Can be used in industrial applications when you want to CIP and require 316L stainless steel construction

Sizes

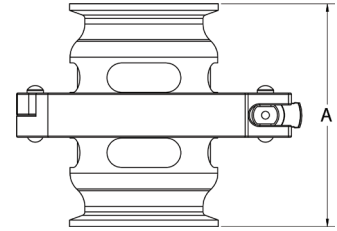
- 1/2" to 6"
 - single pin clamp: 1" to 6"; EPDM or FKM gasket
 - bolted clamp: 1/2" to 6"; PTFE gasket

Features

- 3A CIP certified
- Higher pressure range than other sight glasses
- Easy assembly and disassembly

Materials

- Body: 316L stainless steel
- Sight glass: polycarbonate
- Gaskets: PTFE, EPDM, or FKM
- Surface finish Ra ≤32



Tube O.D.	A (in)	PSI at 70°F (21°C)	PSI at 200°F (94°C)	316L Stainless Steel EPDM Seal Part #	316L Stainless Steel FKM Seal Part #	316L Stainless Steel PTFE Seal Part #
1/2"	3.80	500	300	---	---	HSGP050CCA
3/4"				---	---	HSGP075CCA
1"				HSGE100CCA	HSGV100CCA	HSGP100CCA
1-1/2"				HSGE150CCA	HSGV150CCA	HSGP150CCA
2"		400	200	HSGE200CCA	HSGV200CCA	HSGP200CCA
2-1/2"		350	175	HSGE250CCA	HSGV250CCA	HSGP250CCA
3"		250	125	HSGE300CCA	HSGV300CCA	HSGP300CCA
4"		80	40	HSGE400CCA	HSGV400CCA	HSGP400CCA
6"	6.00	50	25	HSGE600CCA	HSGV600CCA	HSGP600CCA

Seal Kits

Tube O.D.	EPDM Seal Kit Part #	FKM Seal Kit Part #	PTFE Seal Kit Part #
1/2"	---	---	HSG-RKP050
3/4"	---	---	HSG-RKP075
1"	HSG-RKE100	HSG-RKV100	HSG-RKP100
1-1/2"	HSG-RKE150	HSG-RKV150	HSG-RKP150
2"	HSG-RKE200	HSG-RKV200	HSG-RKP200
2-1/2"	HSG-RKE250	HSG-RKV250	HSG-RKP250
3"	HSG-RKE300	HSG-RKV300	HSG-RKP300
4"	HSG-RKE400	HSG-RKV400	HSG-RKP400
6"	HSG-RKE600	HSG-RKV600	HSG-RKP600

Replacement Polycarbonate Sight Inserts

Tube O.D.	Polycarbonate Part #
1/2"	HSG-POLY-050
3/4"	HSG-POLY-075
1"	HSG-POLY-100
1-1/2"	HSG-POLY-150
2"	HSG-POLY-200
2-1/2"	HSG-POLY-250
3"	HSG-POLY-300
4"	HSG-POLY-400
6"	HSG-POLY-600

