



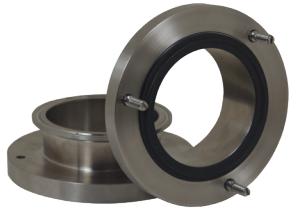
Breakaway Couplings – Clamp

Application

- Minimizes damage associated with pull-away and drive-away incidents

Features

- Designed to be installed between a fixed point and a hose
- 13kN break load bolts standard; other break loads available
- Coupling breaks away with an excessive load
- Other sizes/connections available
- 3A certified for CIP



Materials

- 316 stainless steel polished to standard <32Ra, 3A finish
- Clamp gasket: EPDM standard, optional material available

Specification

- Working pressure: **350 PSI at 70°F (21°C)**

Size	316 Stainless Steel Part #
2"	SBC-E200CC13
3"	SBC-E300CC13



Breakaway Couplings – Bevel Seat

Application

- Minimizes damage associated with pull-away and drive-away incidents

Features

- Designed to be installed between a fixed point and a hose
- 13kN break load bolts standard; other break loads available
- Coupling breaks away with an excessive load
- Other sizes/connections available
- 3A certified for COP

Materials

- 316 stainless steel polished to standard <32Ra, 3A finish
- Clamp gasket: EPDM standard; optional material available

Specification

- Working pressure: **350 PSI at 70°F (21°C)**

Size	316 Stainless Steel Part #
2"	SBC-E200TP13
3"	SBC-E300TP13

M

