

Vacuum Fittings

ISO Flanges and Fittings



Application

- Vacuum sealing for 2-1/2" to 10" O.D. tubing

Sizes

- ISO63 – ISO250

Features

- Each assembly contains two identical flanges and a centering ring assembly and is joined together by clamps
- Centering ring keeps the flanges in line and prevents the O-ring from being pushed in by atmospheric pressure
- Multiple clamps must be used to ensure a sturdy connection
- ISO fittings are compatible with other manufacturers' ISO-KF-QF vacuum flanges
- Material Test Reports (MTRs) available

Materials

- Fittings: 304 stainless steel standard (316L stainless steel optional)
- Clamps: aluminum
- O-ring: FKM

Specifications

- Maximum temperature: **302°F (150°C)**
- Helium leakage testing to 1x10⁻⁸ Torr
- Standards followed: ISO2681

Part Number Breakdown

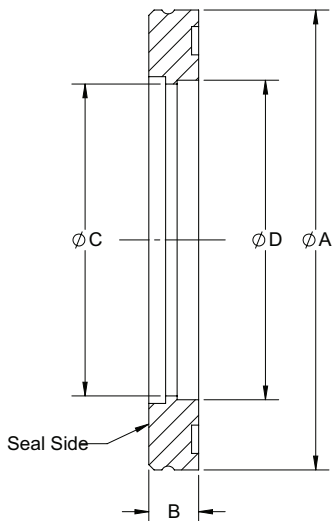
Example: DVF - B 63 G A

(ISO63, 304 stainless steel bored flange)

M

Product Line	-	Series	Size	Material	Type
DVF	-	A – KF B – ISO C – Fitting	63 – ISO63 80 – ISO80 100 – ISO100 160 – ISO160 200 – ISO200 250 – ISO250	G – 304 stainless steel R – 316L stainless steel ¹ L – aluminum (clamp only)	A – ISO bored flange B – ISO blank flange E – ISO centering ring assembly G – ISO flexible bellow H – ISO double claw clamp

¹ Minimum quantity requirements apply.



ISO Bored Flanges

Flange Size	A (in)	B (in)	C (in)	D (in)	304 Stainless Steel Part #
ISO63	3.74	0.47	2.44	2.51	DVF-B63GA
ISO80	4.33		2.94	3.01	DVF-B80GA
ISO100	5.12		3.91	4.02	DVF-B100GA
ISO160	7.09		5.87	6.03	DVF-B160GA
ISO200	9.45		7.87	8.03	DVF-B200GA
ISO250	11.42		9.88	10.02	DVF-B250GA