

## Vacuum Fittings

### KF Flanges and Fittings

#### Application

- Vacuum sealing for 1/2" to 2" O.D. tubing

#### Sizes

- KF10 – KF50

#### Features

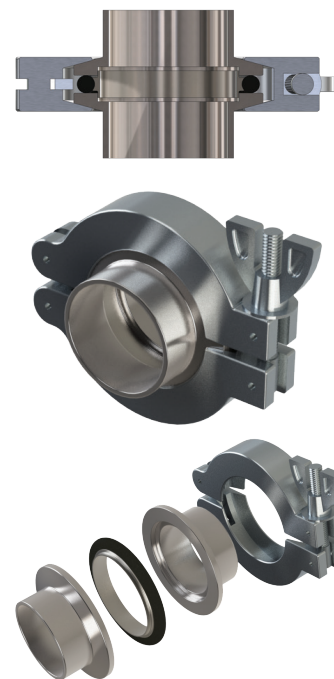
- Each assembly contains two identical flanges and a centering ring assembly and is clamped together with a thumbscrew clamp
- Coupling features prevent O-ring collapse and keep the assembly aligned
- KF flanges are compatible with other ISO-KF-QF vacuum flange manufacturers' components
- Material Test Reports (MTRs) available

#### Materials

- Fittings: 304 stainless steel standard (316L stainless steel optional)
- Clamps: aluminum
- O-ring: FKM

#### Specifications

- Maximum temperature: **302°F (150°C)**
- Helium leakage testing to  $1 \times 10^{-8}$  Torr
- Standards followed: ISO2681



#### Part Number Key

Example: **DVF - A 10 G A**

(KF10, 304 stainless steel bored flange)

Product Line	-	Series	Size	Material	Type
DVF		A – KF B – ISO C – Fitting	10 – KF10 16 – KF16 25 – KF25 40 – KF40 50 – KF50	G – 304 stainless steel R – 316L stainless steel <sup>1</sup> L – aluminum (clamp only)	A – KF bored flange
					B – KF blank flange
					C – KF short weld flange
					D – KF long weld flange
					E – KF centering ring assembly
					F – KF overpressure ring
					G – KF flex bellow
					H – KF clamp

<sup>1</sup> Minimum quantity requirements apply.

#### KF Bored Flanges

Flange Size	A (in)	B (in)	C (in)	D (in)	304 Stainless Steel Part #
KF10	0.51	0.45	1.18	0.12	DVF-A10GA
KF16	0.76	0.68		0.11	DVF-A16GA
KF25	1.01	0.94	1.58	0.13	DVF-A25GA
KF40	1.51	1.43	2.17	0.12	DVF-A40GA
KF50	2.01	1.94	2.95		DVF-A50GA

