

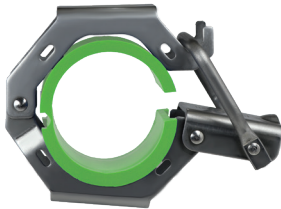


Tube Hex Hangers 24TH-Series Threadless Hanger

The 24TH-series threadless tube hanger from Dixon® introduces a new level of efficiency and hygienic design to the hanger market by incorporating a snap-secure latch system, simplifying and significantly reducing installation time by eliminating the standard thread design.



clip style in closed position



sleeve style in partial open position

Features

- Partial open position allows for adjustment of tubing prior to final lock in
- Save time on installation with no tools needed
- Threadless design and bacteria-resistant architecture
- The snap-in insert assembly makes this hanger easy to assemble
 - Optionally compatible with our standard sleeves (inserts removed)
- Meets MSS SP-58 load ratings

Specifications

- Materials of construction
 - Top and bottom halves and latch: 304 stainless steel
 - Hook: 304 stainless steel spring wire
 - Plastic inserts (qty 4): polypropylene
 - Plastic sleeve (qty 1): polypropylene

NOTE: The polypropylene inserts and sleeve are not to be used together

Size	Inserts and Hanger Part #	Sleeve and Hanger Part #	Only Insert Part #	Only Sleeve Part #
1"	24THP10	24THS10	24TH-PC	24TH-PS-100
1-1/2"	24THP15	24THS15		24TH-PS-150
2"	24THP20	24THS20		24TH-PS-200
3"	24THP30	24THS30		24TH-PS-300
4"	24THP40	24THS40		24TH-PS-400

M

Value Proposition

Dixon is committed to **delighting our customers** by being the easiest company they do business with every day.

