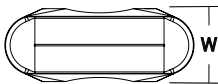
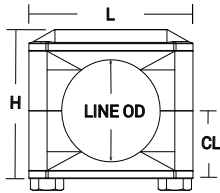
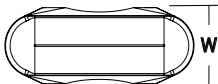
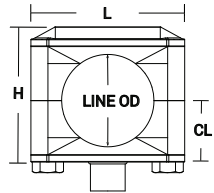
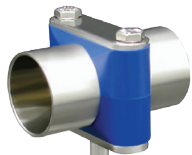


Pipe Size Uni-Hinge Block Hangers



Base Mount Block Hangers – B24V-BM

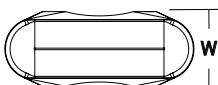
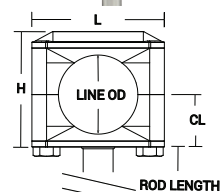
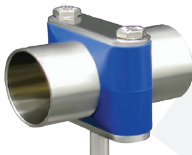
Pipe Size	Line O.D. (in)	H (in)	L (in)	W (in)	CL (in)	304 Stainless Steel Part #
1"	1.32	2.19	2.49	0.75	0.97	B24V-BM-G100
1-1/2"	1.90	2.69	2.99	0.88	1.25	B24V-BM-G150
2"	2.38	3.19	3.36		1.49	B24V-BM-G200
2-1/2"	2.88	3.63	3.74		1.71	B24V-BM-G250



Base Mount Block Hanger Threaded Couplings – B24V-BMTC

Tube Size	Line O.D. (in)	H (in)	L (in)	W (in)	CL (in)	Round Coupling		304 Stainless Steel Part #
						Length (in)	O.D.	
1"	1.32	2.19	2.49	0.75	0.97	.47	3/8"-16	B24-BMTC-G100
1-1/2"	1.90	2.69	2.99	0.88	1.25			B24-BMTC-G150
2"	2.38	3.19	3.36		.59	1/2"-13	B24-BMTC-G200	
2-1/2"	2.88	3.63	3.74				1.71	B24-BMTC-G250

M



Base Mount Block Hanger Rod Mounts – B24V-BMR6

Pipe Size	Line O.D. (in)	H (in)	L (in)	W (in)	CL (in)	Rod (stock length)		304 Stainless Steel Part #
						Length (in)	O.D.	
1"	1.32	2.19	2.49	0.75	0.97	6.00	.38	B24V-BMR6-G100
1-1/2"	1.90	2.69	2.99	0.88	1.25			B24V-BMR6-G150
2"	2.38	3.19	3.36		.50		1.49	B24V-BMR6-G200
2-1/2"	2.88	3.63	3.74	1.71		B24V-BMR6-G250		