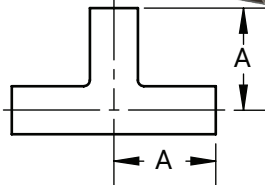
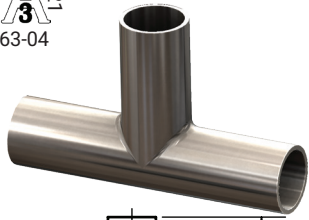


High Purity BioPharm Fittings

Weld x Weld x Weld Tees – T7WWW

631
3
63-04

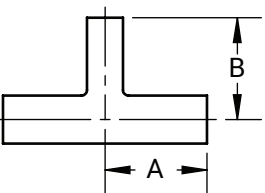
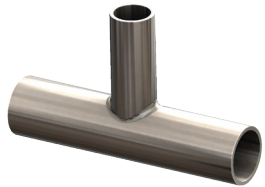


BPE Table DT-4.1.2-1
ASME BPE 2019

Tube O.D.	A (in)	Nominal Wall (in)	PL Finish – SF1	PM Finish – SF4
1/2"	1.875	0.065	T7WWW-050PL	T7WWW-050PM
3/4"	2.000		T7WWW-075PL	T7WWW-075PM
1"	2.125		T7WWW-100PL	T7WWW-100PM
1-1/2"	2.375		T7WWW-150PL	T7WWW-150PM
2"	2.875		T7WWW-200PL	T7WWW-200PM
2-1/2"	3.125		T7WWW-250PL	T7WWW-250PM
3"	3.375	0.083	T7WWW-300PL	T7WWW-300PM
4"	4.125		T7WWW-400PL	T7WWW-400PM
6"	5.625	0.109	T7WWW-600PL	T7WWW-600PM

Weld x Weld x Weld Reducing Tees – T7RWWW

631
3
63-04



BPE Table DT-4.1.2-6
ASME BPE 2019

Tube O.D.	A (in)	B (in)	Nominal Wall (in)	PL Finish – SF1	PM Finish – SF4	
3/4" x 1/2"	2.000	2.000	0.065 x 0.065	T7RWWW-075050PL	T7RWWW-075050PM	
1" X 1/2"	2.125	2.125		T7RWWW-100050PL	T7RWWW-100050PM	
1" X 3/4"				T7RWWW-10075PL	T7RWWW-10075PM	
1-1/2" X 1/2"				T7RWWW-150050PL	T7RWWW-150050PM	
1-1/2" X 3/4"	2.375	2.375		T7RWWW-150075PL	T7RWWW-150075PM	
1-1/2" X 1"				T7RWWW-150100PL	T7RWWW-150100PM	
2 X 1/2"				T7RWWW-200050PL	T7RWWW-200050PM	
2" X 3/4"	2.875	2.625		T7RWWW-200075PL	T7RWWW-200075PM	
2" X 1"				T7RWWW-200100PL	T7RWWW-200100PM	
2" X 1-1/2"				T7RWWW-200150PL	T7RWWW-200150PM	
2-1/2" X 1/2"	3.125	2.875		0.065 x 0.065	T7RWWW-250050PL	T7RWWW-250050PM
2-1/2" X 3/4"					T7RWWW-250075PL	T7RWWW-250075PM
2-1/2" X 1"			T7RWWW-250100PL		T7RWWW-250100PM	
2-1/2" X 1-1/2"			T7RWWW-250150PL		T7RWWW-250150PM	
2-1/2" X 2"			T7RWWW-250200PL		T7RWWW-250200PM	
3" X 1/2"			3.375		3.125	0.083 x 0.065
3" X 3/4"	T7RWWW-300075PL	T7RWWW-300075PM				
3" X 1"	T7RWWW-300100PL	T7RWWW-300100PM				
3" X 1-1/2"	T7RWWW-300150PL	T7RWWW-300150PM				
3" X 2"	T7RWWW-300200PL	T7RWWW-300200PM				
3" X 2-1/2"	T7RWWW-300250PL	T7RWWW-300250PM				
4" X 1/2"	4.125	3.625	0.083 x 0.065	T7RWWW-400050PL	T7RWWW-400050PM	
4" X 3/4"				T7RWWW-400075PL	T7RWWW-400075PM	
4" X 1"				T7RWWW-400100PL	T7RWWW-400100PM	
4" X 1-1/2"				T7RWWW-400150PL	T7RWWW-400150PM	
4" X 2"				T7RWWW-400200PL	T7RWWW-400200PM	
4" X 2-1/2"				T7RWWW-400250PL	T7RWWW-400250PM	
4" X 3"	3.875	3.875	0.083 x 0.065	T7RWWW-400300PL	T7RWWW-400300PM	
6" X 3"				T7RWWW-600300PL	T7RWWW-600300PM	
6" X 4"	5.625	5.125	0.109 x 0.083	T7RWWW-600400PL	T7RWWW-600400PM	

NOTE: BPE 2019 Specifications

PL Finish – SF1

O.D. = 32Ra Mechanically Polished

I.D. = 20Ra Mechanically Polished

PM Finish – SF4

O.D. = 32Ra Mechanically Polished

I.D. = 15Ra Mechanically Polished and Electropolished