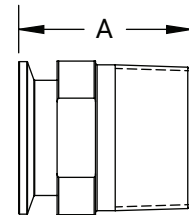


High Purity BioPharm Line

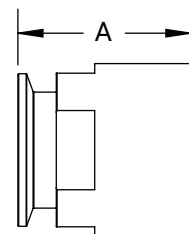
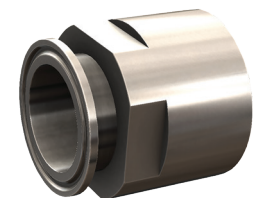
Clamp Adapters x Male NPT – T21MP

Clamp Size	NPT Thread Size	A (in)	PL Finish – SF1
1/2"	1/4"	2.00	T21MP-050025PL
	3/8"		T21MP-050375PL
	1/2"	1.63	T21MP-050PL
	3/4"		T21MP-050075PL
3/4"	1/4"	2.00	T21MP-075025PL
	3/8"		T21MP-075375PL
	1/2"	1.79	T21MP-075050PL
	3/4"		T21MP-075PL
1"	1/2"	2.19	T21MP-100050PL
	1"	2.25	T21MP-100PL
1-1/2"	1-1/2"		T21MP-150PL
2"	2"	2.64	T21MP-200PL
2-1/2"	2-1/2"	2.88	T21MP-250PL
3"	3"	3.07	T21MP-300PL
4"	4"	3.16	T21MP-400PL



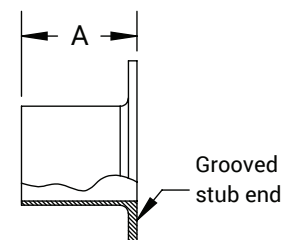
Clamp Adapters x Female NPT – T22MP

Clamp Size	NPT Thread Size	A (in)	PL Finish – SF1
1/2"	1/8"	1.25	T22MP-050125PL
	1/4"	1.50	T22MP-050025PL
	3/8"		T22MP-050375PL
	1/2"	1.63	T22MP-050PL
3/4"	T22MP-050075PL		
3/4"	1/4"	1.50	T22MP-075025PL
	3/8"		T22MP-075375PL
	1/2"	1.63	T22MP-075050PL
	3/4"		T22MP-075PL
1"	1"	2.25	T22MP-100PL
1-1/2"	1-1/2"	2.25	T22MP-150PL
2"	2"	2.34	T22MP-200PL
2-1/2"	2-1/2"	2.09	T22MP-250PL
3"	3"	2.19	T22MP-300PL
4"	4"	2.63	T22MP-400PL


M

Stub Adapters – T14VB

Tube O.D.	A (in)	PL Finish – SF1
1/2"	2.00	T14VB-050PL
3/4"		T14VB-075PL
1"		T14VB-100PL
1-1/2"		T14VB-150PL
2"	2.50	T14VB-200PL
2-1/2"		T14VB-250PL
3"		T14VB-300PL
4"		T14VB-400PL
6"	3.00	T14VB-600PL



PL Finish – SF1

O.D. = 32Ra Mechanically Polished

I.D. = 20Ra Mechanically Polished

PM Finish – SF4

O.D. = 32Ra Mechanically Polished

I.D. = 15Ra Mechanically Polished and Electropolished