

Boss-Lock Coupler and Tube with 45° Cut

Application

- For use on trailer relief valves

Features

- Butt weld to tubing
- Nitrile rubber gaskets standard, other gaskets available on pages 68 - 71
- All Boss-Lock couplers are supplied with pull-ring safety clips



B

Size	356T6 Aluminum Part #
2"	AC200TUBE

In-Line Sight Glasses

Application

- Designed for dry bulk transfer hose

Feature

- Not intended for liquid service. For dry bulk transfer *only*.

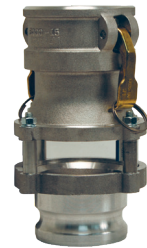


Materials

- Body: aluminum
- Seals: nitrile rubber
- Sight glass: acrylic
- Hardware: stainless steel
- Cam arms (where applicable): bronze

Coupler and Adapter

Size	Aluminum Part #
3" x 3"	3533CA
3" x 4"	3534CA
4" x 3"	3543CA
4" x 4"	3544CA



Adapter and Adapter

Size	Aluminum Part #
3" x 3"	3533AA
3" x 4"	3534AA
4" x 4"	3544AA



Coupler and Coupler

Size	Aluminum Part #
3" x 3"	3533CC
4" x 3"	3543CC
4" x 4"	3544CC

