

Sanitary Spools



Sanitary spools are pre-fabricated lengths of stainless steel tubing with sanitary fittings welded to the ends.

Applications

- Sanitary process lines can be built without having to use on-site fabrication or welding
- OEM skid packages that have predetermined spool specifications: Tube O.D. and length, end connections, and finish

Sizes

- 1/2" – 4" tube O.D.

Features

- Clamp connection, standard
- Will fabricate to customer drawings
- Customer part number/logo can be laser etched on each spool

Materials

- 304 or 316L stainless steel
- Surface finish: Internal product contact surface finish ≤ 32Ra



Clamp end



Weld end


Size	Material	12" Part #	18" Part #	24" Part #	36" Part #	48" Part #
1-1/2"	304 stainless steel	S15CC012.000GC	S15CC018.000GC	S15CC024.000GC	S15CC036.000GC	S15CC048.000GC
2"		S20CC012.000GC	S20CC018.000GC	S20CC024.000GC	S20CC036.000GC	S20CC048.000GC
2-1/2"		S25CC012.000GC	S25CC018.000GC	S25CC024.000GC	S25CC036.000GC	S25CC048.000GC
3"		S30CC012.000GC	S30CC018.000GC	S30CC024.000GC	S30CC036.000GC	S30CC048.000GC
4"		S40CC012.000GC	S40CC018.000GC	S40CC024.000GC	S40CC036.000GC	S40CC048.000GC
1-1/2"	316L stainless steel	S15CC012.000RC	S15CC018.000RC	S15CC024.000RC	S15CC036.000RC	S15CC048.000RC
2"		S20CC012.000RC	S20CC018.000RC	S20CC024.000RC	S20CC036.000RC	S20CC048.000RC
2-1/2"		S25CC012.000RC	S25CC018.000RC	S25CC024.000RC	S25CC036.000RC	S25CC048.000RC
3"		S30CC012.000RC	S30CC018.000RC	S30CC024.000RC	S30CC036.000RC	S30CC048.000RC
4"		S40CC012.000RC	S40CC018.000RC	S40CC024.000RC	S40CC036.000RC	S40CC048.000RC

NOTE: For additional sizes and configurations, contact Dixon Sanitary 800.789.1718.




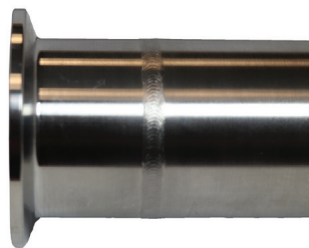
Standard Sanitary Surface Finish Options

Option M (most economical)

- Polished 32 Ra I.D.
- Exterior weld chemically treated but not ground flush
- Compliant to  00-01 standard

Option C

- Polished 32 Ra I.D./O.D.
- Exterior weld ground flush
- Compliant to  00-01 standard



NOTE: If you would like to request a different surface finish, please contact Dixon Sanitary at 800.789.1718 or email sanitariesales@dixonvalve.com.