

Type B 90° Dixon® Elbows

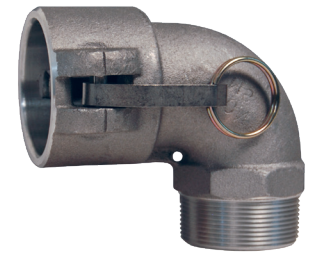
Coupler and Male NPT

Feature

- Nitrile rubber gasket standard, other gaskets available on pages 68 - 71

Size	356T6 Aluminum Part #	316 Stainless Steel Part #
1-1/2"	150B-90AL	---
2"	200B-90AL	200B-90SS ¹
3"	---	300B-90SS ¹

¹ Parts are produced as a welded fabrication.



B

Type C 90° Dixon Elbows

Coupler and Hose Shank

Feature

- Nitrile rubber gasket standard, other gaskets available on pages 68 - 71

Size	356T6 Aluminum Part #	Brass Part #	316 Stainless Steel Part #
1-1/4"	---	125C-90BR	---
1-1/2"	150C-90AL	---	150C-90SS
2"	200C-90AL	200C-90BR	200C-90SS
3"	300C-90AL	---	300C-90SS
4"	400C-90AL	---	400C-90SS ¹
6"	600C-90AL	---	---

¹ Part is produced as a welded fabrication



Type D 90° Dixon Elbows

Coupler and Female NPT

Feature

- Nitrile rubber gasket standard, other gaskets available on pages 68 - 71

Size	356T6 Aluminum Part #	Brass Part #	316 Stainless Steel Part #
1"	---	---	100D-90SS
1-1/4"	---	125D-90BR	---
1-1/2"	150D-90AL	150D-90BR	---
2"	200D-90AL	200D-90BR	200D-90SS
2"	---	BD90200EZ ²	---
3"	300D-90AL	---	300D-90SS
4"	400D-90AL	---	400D-90SS ¹
4"	AD90400EZ ²	---	---
6"	600D-90AL	---	---

¹ Part is produced as a welded fabrication

² EZ Boss-Lock design



EZ Boss-Lock design