

**HT-Series Correct Connect®**

**ISO16028 Flush Face Male Threaded Bulkhead Couplers**



4HTJB5



4HTRB5

Body Size	Threads	Steel Part #
1/2"	13/16" – 16 ORFS BH	4HTRB4
	7/8" – 14 JIC BH	4HTJB5
	1" – 14 ORFS BH	4HTRB5
	1-1/16" – 12 JIC BH	4HTJB6
	1-3/16" – 12 ORFS BH	4HTRB6

**ISO16028 Flush Face Male Threaded Bulkhead Plugs**



HT4JB5



HT4RB5

Body Size	Threads	Steel Part #
1/2"	13/16" – 16 ORFS BH	HT4RB4
	7/8" – 14 JIC BH	HT4JB5
	1" – 14 ORFS BH	HT4RB5
	1-1/16" – 12 JIC BH	HT4JB6
	1-3/16" – 12 ORFS BH	HT4RB6

**ISO16028 Flush Face 90° Female Threaded Couplers**



1/2"

Body Size	Threads	Steel Part #
1/2"	9/16" – 18 ORB	4HT90F3
	3/4" – 16 ORB	4HT90F4

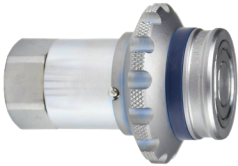
**ISO16028 Flush Face 90° Female Threaded Plugs**



1/2"

Body Size	Threads	Steel Part #
1/2"	9/16" – 18 ORB	HT490F3
	3/4" – 16 ORB	HT490F4

**ISO16028 Flush Face Interchange Coupler with Flange Sleeve**



Body Size	Threads	Part #
1/2"	1/2" – 14 NPTF	4HTF4-FS
3/4"	3/4" – 14 NPTF	6HTF6-FS

**ISO16028 Flush Face Coupler Dust Plugs**



Body Size	Nitrile Part #
1/4"	2HTDP
3/8"	3HTDP
1/2"	4HTDP
5/8"	5HTDP
3/4"	6HTDP
1"	8HTDP

**ISO16028 Flush Face Plug Dust Caps**



Body Size	Nitrile Part #
1/4"	HT2DC
3/8"	HT3DC
1/2"	HT4DC
5/8"	HT5DC
3/4"	HT6DC
1"	HT8DC

K