

AG-Series Hydraulic Couplings

Application

- Used on construction equipment, farm implements, and most other mobile equipment

Features

- Ball valve and poppet valve options available
- Interchangeable with Pioneer® 4000 series, Faster® NS/NV, Safeway® S20, and Stucchi® IR-series. See Hydraulic Profile Chart on page 507
- Contact Dixon® for pressure ratings and other technical information

Specification

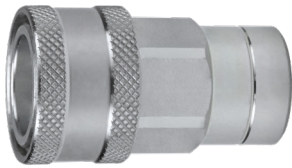
- Nitrile rubber seal standard, providing a temperature range of **-40°F to 250°F** (-40°C to 121°C)

Agricultural Ball Valve Female Threaded Couplers



Body Size	Threads	Steel Part #
1/4"	1/4" – 18 NPTF	2AGF2
3/8"	3/8" – 18 NPTF	3AGF3
1/2"	1/2" – 14 NPTF	4AGF4
	1/2" – 14 BSPP	4AGBF4
	3/4" – 16 ORB	4AGOF4
	7/8" – 14 ORB	4AGOF5
	3/4" – 14 NPTF	4AGF6
3/4"	3/4" – 14 NPTF	6AGF6
1"	1" – 11-1/2 NPTF	8AGF8

Agricultural Poppet Valve Female Threaded Couplers



Body Size	Threads	Steel Part #
1/4"	1/4" – 18 NPTF	2AGF2-PV
3/8"	3/8" – 18 NPTF	3AGF3-PV
1/2"	1/2" – 14 NPTF	4AGF4-PV
	1/2" – 14 BSPP	4AGBF4-PV
	3/4" – 16 ORB	4AGOF4-PV
	7/8" – 14 ORB	4AGOF5-PV
	3/4" – 14 NPTF	4AGF6-PV
3/4"	3/4" – 14 NPTF	6AGF6-PV
1"	1" – 11-1/2 NPTF	8AGF8-PV

Agricultural Push-Pull Ball Valve Female Threaded Couplers



Body Size	Threads	Steel Part #
1/2"	1/2" – 14 NPTF	4AGF4-PS
	3/4" – 16 ORB	4AGOF4-PS
	7/8" – 14 ORB	4AGOF5-PS
	3/4" – 14 NPTF	4AGF6-PS

Agricultural Push-Pull Poppet Valve Female Threaded Couplers



Body Size	Threads	Steel Part #
1/2"	1/2" – 14 NPTF	4AGF4-PV-PS
	3/4" – 16 ORB	4AGOF4-PV-PS
	7/8" – 14 ORB	4AGOF5-PV-PS
	3/4" – 14 NPTF	4AGF6-PV-PS