

High Capacity Split Flange Swivel Components Bearing Packs

New

Feature

- Dual wide-set bearing race for higher moment loads

Materials

- Through hardened forged carbon steel
- Carbon steel ball bearings
- FKM dust seals

Size	Part #
2"	2HCBP
3"	3HCBP
4"	4HCBP



C

Nose Pieces

Features

- 2 required per bearing pack
- Sch 80 butt weld ends

Material

- Carbon steel and 316 stainless steel

Size	Carbon Steel Part #	316 Stainless Steel Part #
2"	2HCNPCS	2HCNPSS
3"	3HCNPCS	3HCNPSS
4"	4HCNPCS	4HCNPSS



Seal Kits

Features

- Kits contain: seals, PTFE retainer, carbon steel bolts, and lock washers
- 1 required per bearing pack

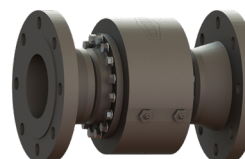
Size	Baylast™ Part #	FKM Part #	PTFE Part #	EPDM Part #	FDA Nitrile Rubber Part #
2"	2HCSK-BAYLAST	2HCSK-VI	2HCSK-TES	2HCSK-EP	2HCSK-FB
3"	3HCSK-BAYLAST	3HCSK-VI	3HCSK-TES	3HCSK-EP	3HCSK-FB
4"	4HCSK-BAYLAST	4HCSK-VI	4HCSK-TES	4HCSK-EP	4HCSK-FB



High Capacity Split Flange Style 20 – Weld x Weld



High Capacity Split Flange Style 20 – 150# Flange x 150# Flange



Size	Carbon Steel Weld x Weld with Baylast Pressure Seals Part #	Carbon Steel Weld x Weld with FKM Pressure Seals Part #	Carbon Steel 150# Flange x 150# Flange with Baylast Pressure Seals Part #	Carbon Steel 150# Flange x 150# Flange with FKM Pressure Seals Part #
2"	HC220WXWCS00 ¹	HC220WXWCS10 ¹	HC220FGXFGCS00	HC220FGXFGCS10
3"	HC320WXWCS00 ¹	HC320WXWCS10 ¹	HC320FGXFGCS00	HC320FGXFGCS10
4"	HC420WXWCS00 ¹	HC420WXWCS10 ¹	HC420FGXFGCS00	HC420FGXFGCS10

¹ Remove nose piece prior to welding. Reinstall when welding is complete and parts have had sufficient time to cool.