

C

### TTMA-Series Flange Adapters

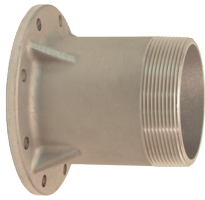
**Features**

- Simply and easily converts threaded components to a standard TTMA flange configuration
- Solid cast lightweight aluminum design is more durable than welded fabrications
- Design improves flow through adapter
- Compact size reduces the overall space needed to install



**TTMA Flange and Male NPT Adapters**

TTMA Flange	Male NPT	Overall Length	Aluminum Part #
3"	3"	2-1/2"	TTF3AL-3MT
4"	3"	2-1/2"	TTF4AL-3MT
	4"	2-1/2"	TTF4AL-4MT



**TTMA Flange and Extended Length Male NPT Adapters**

TTMA Flange	Male NPT	Overall Length	Aluminum Part #
4"	3"	5-1/2"	TTF4AL-3EMT
	4"	5-1/2"	TTF4AL-4EMT



**TTMA Flange and Female NPT Adapters**

TTMA Flange	Female NPT	Overall Length	Aluminum Part #
4"	3"	2-1/2"	TTF4AL-3FT
	4"	2-1/2"	TTF4AL-4FT



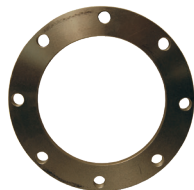
**TTMA Slip-on Socket Weld Flange**

TTMA Flange	Pipe Size	356T6 Aluminum Part #
4"	4"	TTF400SP



**TTMA Slip-on Plate Flange**

TTMA Flange	Pipe Size	Aluminum Part #
4"	4"	TTMA-64



**TTMA Butt Weld Flange**

TTMA Flange	Pipe Size	Thickness	Aluminum Part #
3"	4"	3/8"	TTF3AL
4"	4"	3/8"	TTF4AL

NOTE: For flange dimensions, diagrams, and additional information, please reference [dixonvalve.com](http://dixonvalve.com).